

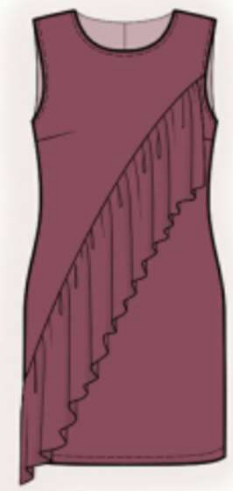
Tunic Bible and Beyond – *Unlock the magic of the tunic muslin by designing a stylized dress from your Tunic sloper*

- Pick from selection of 14 Lekala dress style based on tunic sloper. Indicate 1st, 2nd and 3rd choice.
- Purchase and download copywrited Lekala pattern from Lekala.com.
- “Sloper Magic” class to Create dress pattern pieces to fit your unique tunic sloper.

NAME <input type="text"/>			
Select Dress Pattern for Sloper Fitting			
Code	Lekala #	Description	Fit
A	2060	Asymmetrical Dress	FITTED
B	2071	Dress with Trimming	LOOSE w/ straight skirt
C	2072	Dress with Asymmetrical Closure	LOOSE w/ flaired skirt
D	2103	Dress with yoke	LOOSE w/ flaired skirt
E	2141	Dress with Decorative Piping	FITTED
F	2209	Dress with Pockets in French Darts	FITTED
G	4009	Dress with Flounce	LOOSE w/ straight skirt
H	4191	Dress with Lace Details	FITTED
I	4349	Two Color Dress	LOOSE w/ straight skirt
J	4386	Dress with Pleats	FITTED
K	4458	Two Color Dress with Buckle	FITTED
L	4667	Sleeveless Dress with front pleats	LOOSE w/ flaired skirt
M	4826	Dress with in-seam pockets	LOOSE w/ straight skirt
N	4831	Dress with asymmetrical skirt seam	LOOSE w/ straight skirt

Lekala patterns based on tunic muslin or sloper

Dress with Flounce L4009
(G)



Dress with Lace Details L4191
(H)



Two Color Dress with Buckle L4458
(K)

Two-Color Dress L4349
(I)



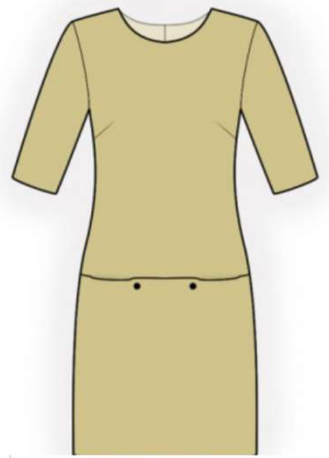
Sleeveless Dress (with front pleats) L4667
(L)



Dress with Pleats L4386
(J)



Dress with in-seam pockets L4826
(M)



Lekala patterns based on tunic muslin or sloper (cont)

Dress with asymmetrical skirt seam L4831

(N)



Asymmetrical Dress L2060

(A)



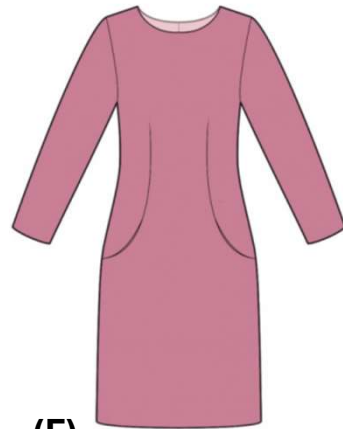
Dress with yoke L2103

(D)



Dress with Decorative piping L2141

(E)



(F)

Dress with Pockets in French Darts L2209



(C)

Dress with asymmetrical Closure L2072

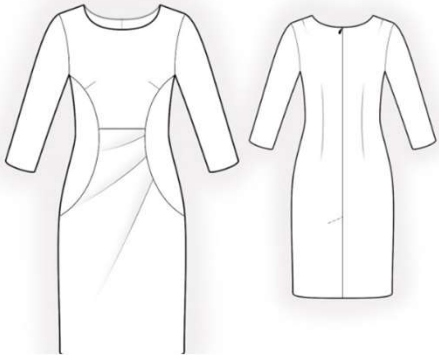


(B)

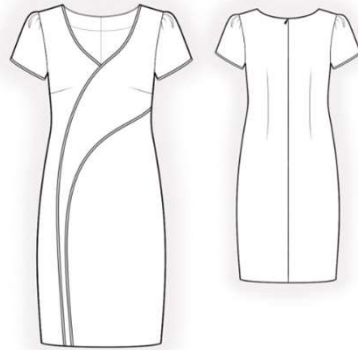
Dress With Trimming - Sewing Pattern #2071

FITTED A, E, F, H, J, K

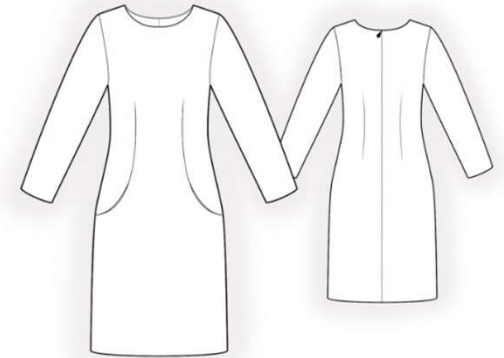
(A)



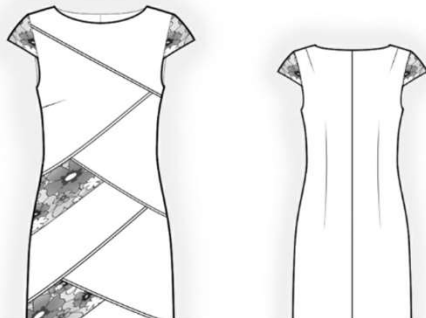
(E)



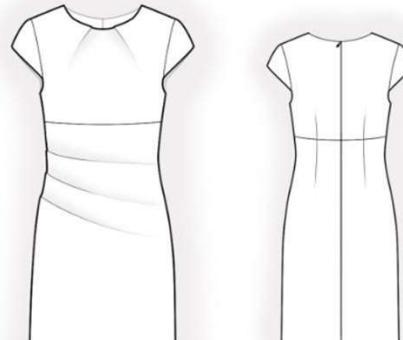
(F)



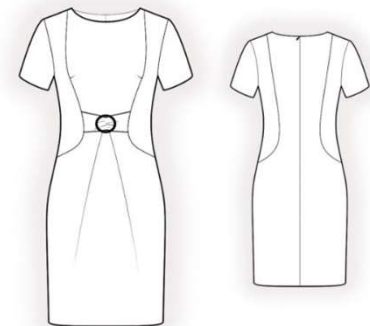
(H)



(J)



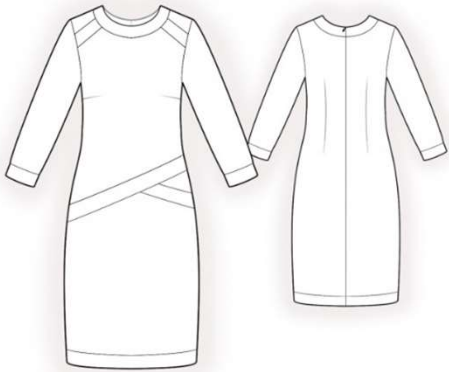
(K)



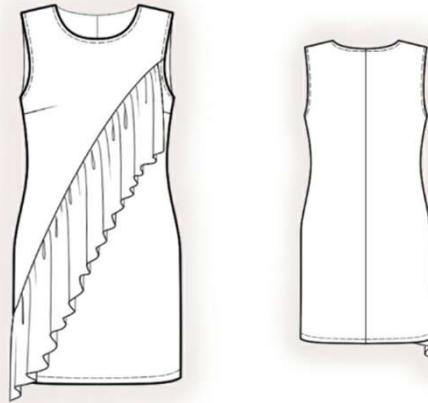
[JLeuterman]

Loose w/ straight skirt B, G, I, M, N

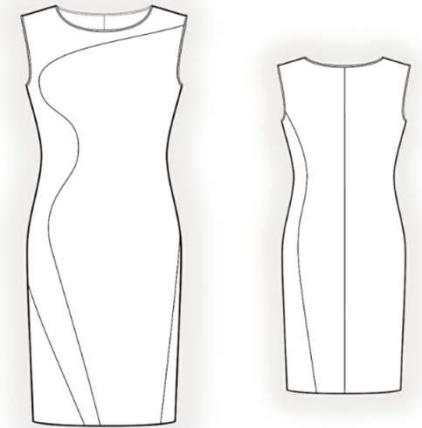
(B)



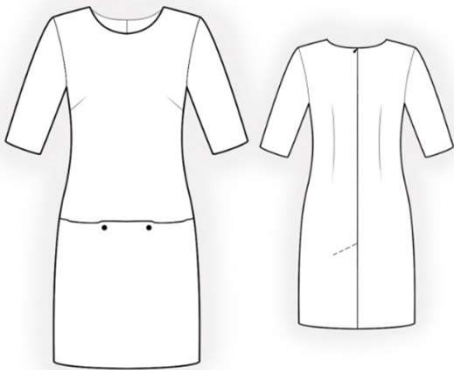
(G)



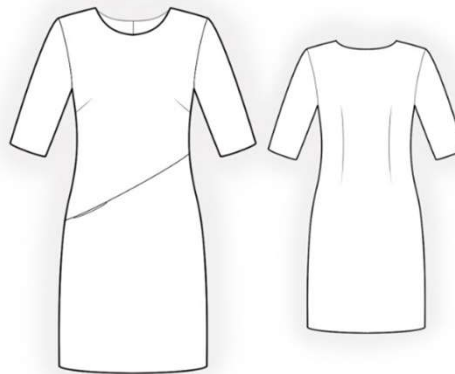
(I)



(M)



(N)



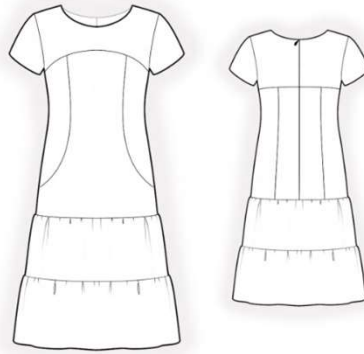
[JLeuterman]

Loose w/ flaired skirt C, D, L

(C)



(D)



(L)

